

CHERRY CREEK TRAIL



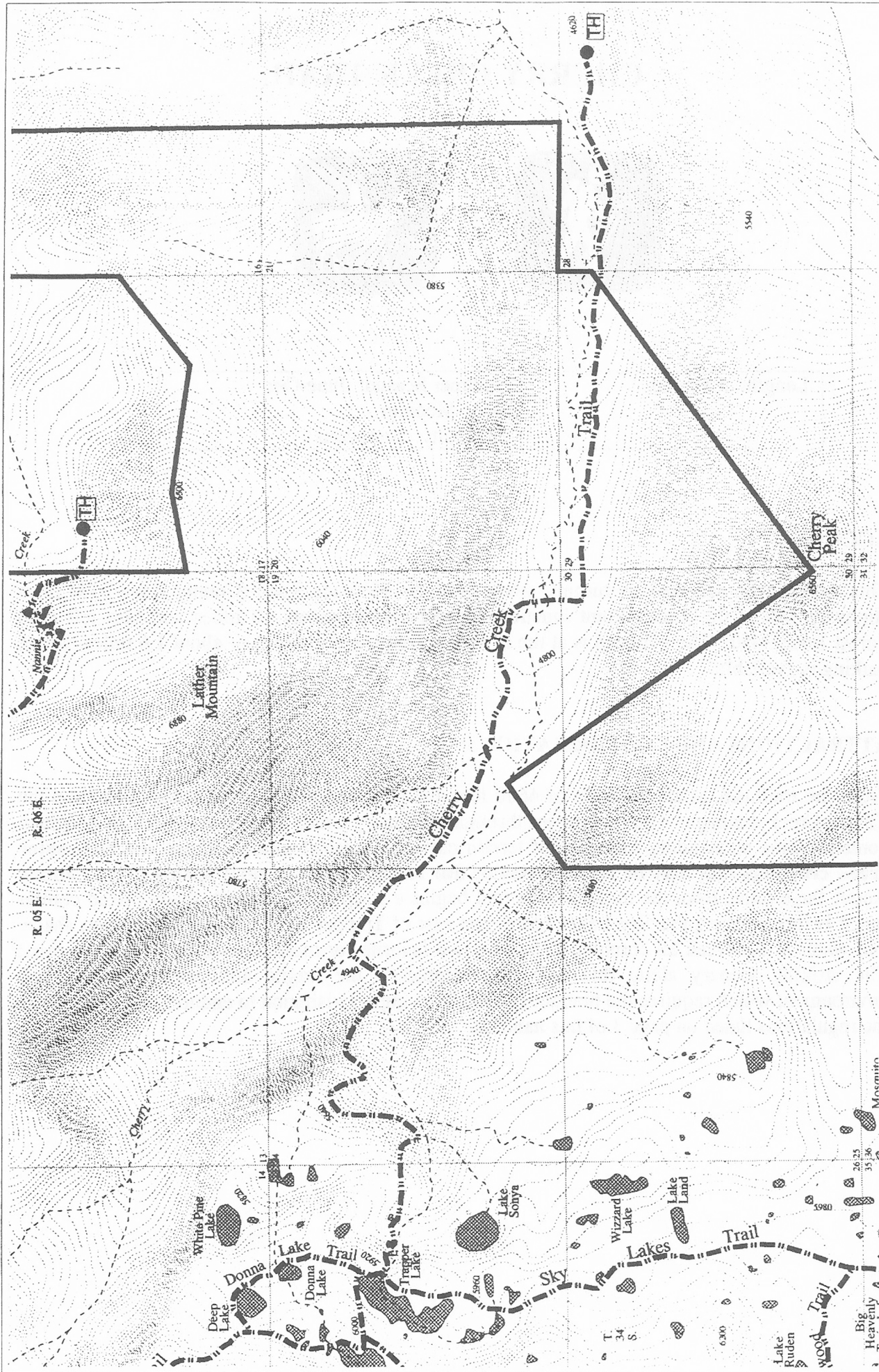
Length: 5.3 miles	Summer Season: June-Oct. Use: Medium Difficulty: Strenuous
-------------------	--

ACCESS:




This trail can be accessed by turning north onto the Westside Road (County Road 531) from Highway 140 at the Rocky Point junction. Travel approximately 10 miles and turn left onto Forest Road 3450. The trailhead is at the end of the road, at a distance of about 1.6 miles, where parking is available.

ATTRACTIONS AND CONSIDERATIONS:

From the trailhead, at an elevation of 4600 feet, the path begins a gradual, steady climb up the Cherry Creek drainage. The trail passes through the Cherry Creek Natural Research Area, which contains some outstanding examples of terrain carved by glacial action. **There are two major creek crossings that may be not be passable due to high water in early spring (May - June).** About three miles from the trailhead, the trail begins a steep climb through shady mixed conifer forest before entering the Sky Lakes basin, just east of Trapper Lake. (The dense timber, shade, and water in the creek all combine to make this a favorite for mosquitoes most of the summer.) The striking scenery along this trail is a sample of the fragile and primitive wilderness environment which requires the practice of minimum impact visitation to endure: please adhere to the regulations listed on page 3 of this handout.



CHERRY CREEK TRAIL

-  Sky Lakes Wilderness Boundary
-  Forest Boundary
-  Wetland/Lake

-  Trail
-  Stream
-  20 Ft. Contour Line



Klamath Ranger District - Winema National Forest
 bjb 3/15/99